

Working with Module Message

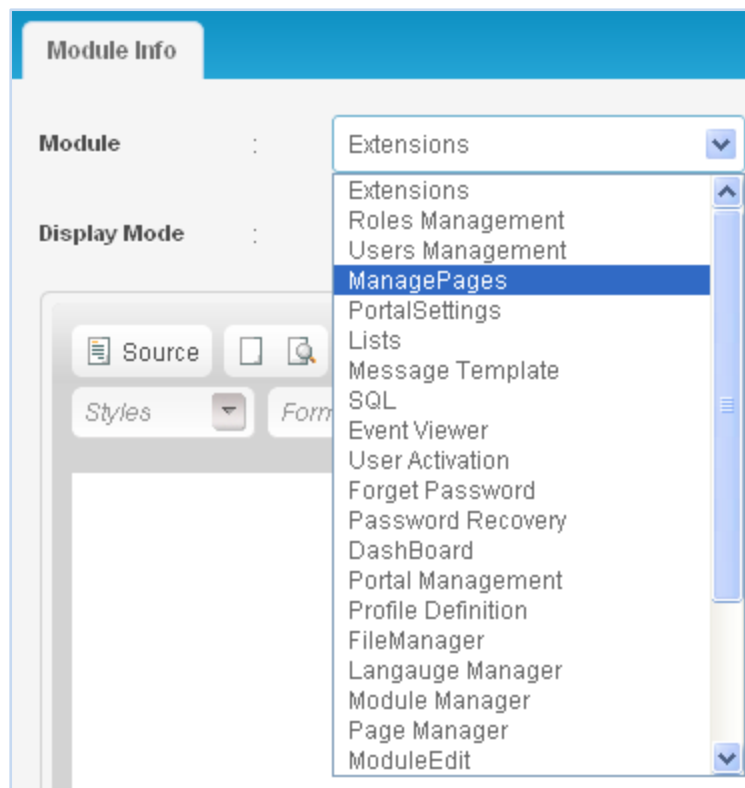
Module Message is an information bar that appears when a new page is opened. The bar contains a brief description about the page that one has opened. The message can be displayed either at the top or at the bottom of the page.

Adding Module Message to a Page

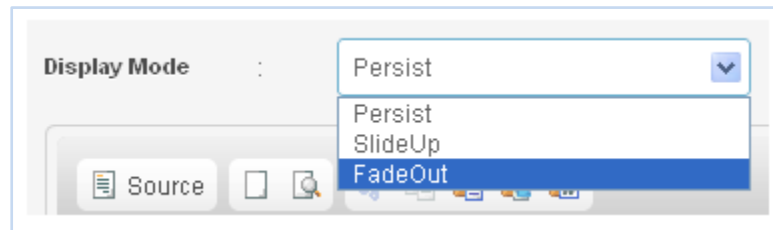


Step1. To add the 'Module Message' to a page, click the [Module Message](#) icon in **SageFrame C-Panel** which prompts you to 'Module Message Manager' page.

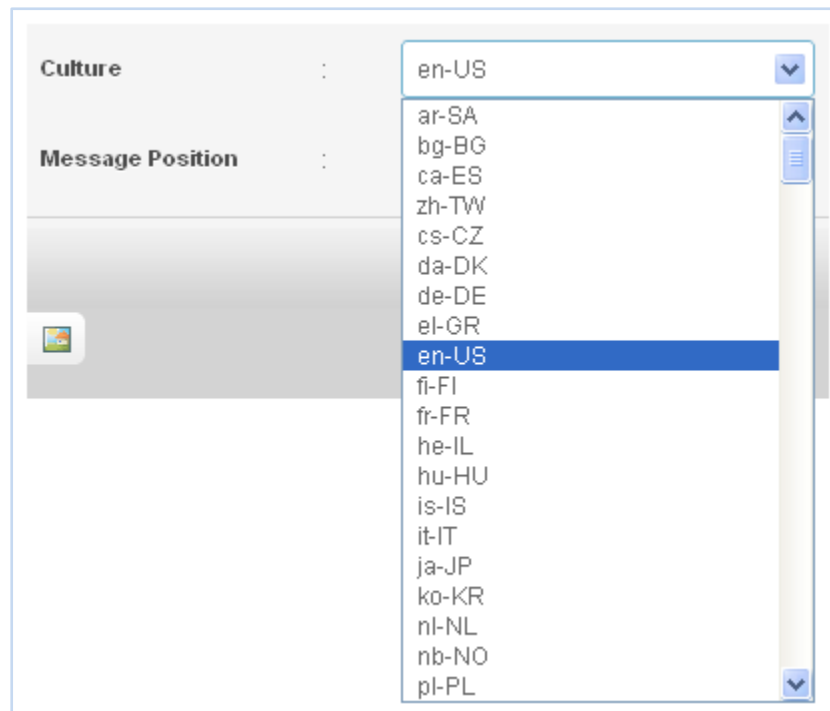
Step2. Select the Module from the dropdown list for which you want to add the **Module Message**.



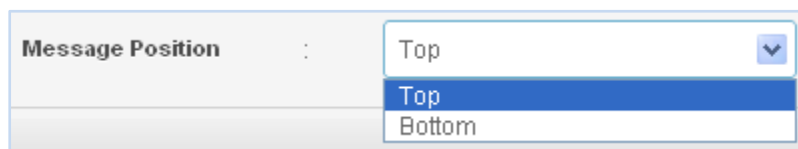
Step3. Select the **Display Mode** for the message bar from the list of options .i.e. **Persist, Side Up and FadeOut.**



Step4.Select the culture from the drop down i.e., the language for message.



Step5.Select the position for the message bar to appear, it can appear either at the top or at the bottom.

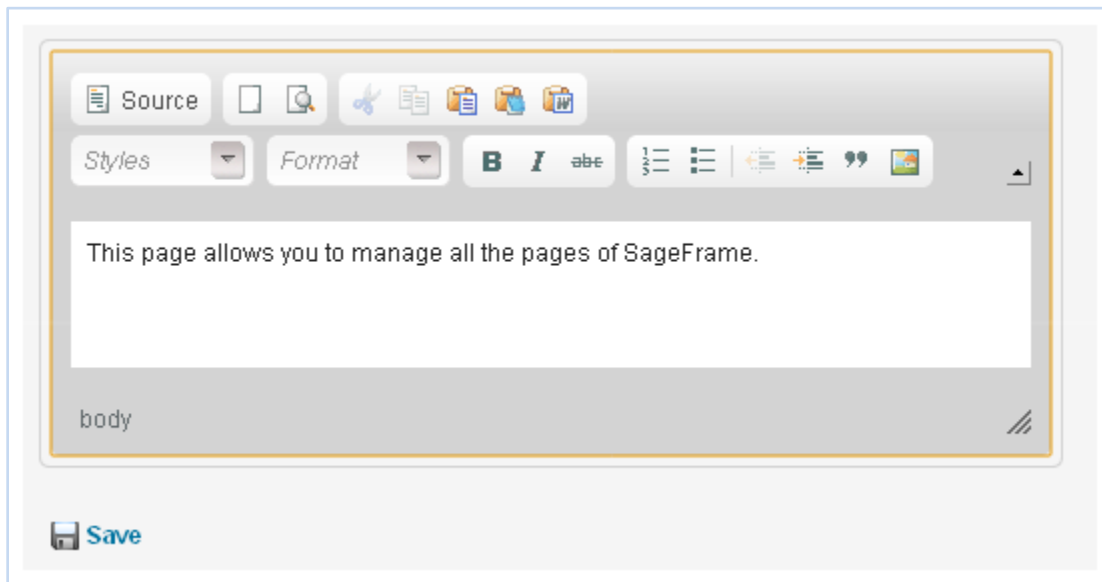


Step6.Select the message type i.e., whether it is an information message or a warning message.



Step7. Click the **Is Active** checkbox to apply the module message.

Step8. Type the message to be displayed in the message bar and click the **Save** button.



Now that you have created and saved a message for the module **'Manage Pages'**; the message bar will appear when we open the Pages module from the SageFrame C-Panel as shown below:-

